



Aboriginal Education

'At the Chalk Face'

Paul Hughes and Tammy Anderson

Image by Chris Johnstone

True or False

- What are your cultural assumptions and how will they impact on what you do in your classroom and school?

Charles Perkins

We can not live in the past, but the past lives in
us.

What's in your dilly bag?





Everyone's dilly bag is unique. It is made and sourced by and for you. How fulfilling you make it will be up to you!

In our dilly bag we have:

- Courage
- High expectations
- Honour
- Valuing knowledge – Two Ways
- Authenticity
- Relationships at the core

What does your dilly bag say about
you?

Culture will beat strategy every
time.

Ghandi

We don't see the world as it really is we see it how we are.

Do any of these pictures resonate with you?



How does this translate in schools?

3 key strategies that made a difference?

Ongoing Meaningful Relationships	Do it with the community not for them	Flattened Authority Structure
<ul style="list-style-type: none">• Not Tokenistic• Meaningful Relationships• Attendance and membership of local AECG• Identified positions	<ul style="list-style-type: none">• Value and utilise community leaders• Collective ownership and consultation• Develop the capacity of community members• Expose the full resources available	<ul style="list-style-type: none">• Empower and educate staff to have conversations• Relationships are valued by staff and community• PLPs• Cultural Immersion• Modelling by school leaders

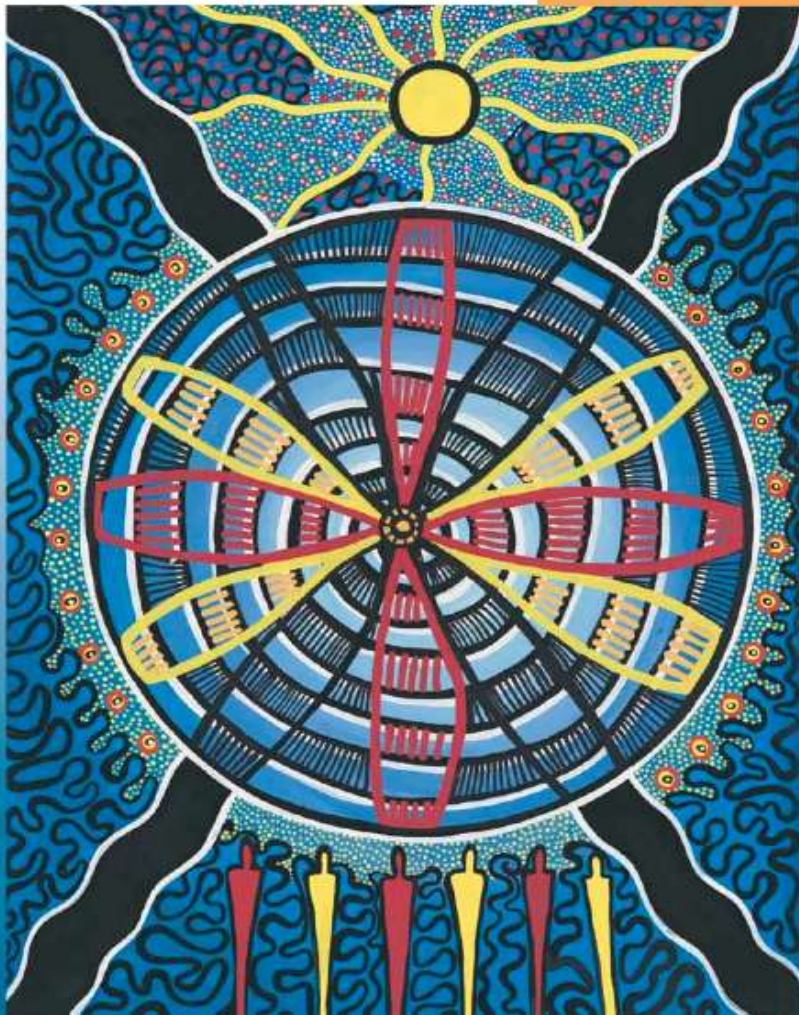
As Educators - what do you believe
your role is in supporting other
teachers, the school executive and
school Principal in developing and
maintaining genuine relationships
with the community?

We co-create power in every moment
of every interaction.

Ralph Stacey 2005

Aboriginal and Torres Strait Islander *Education Action Plan*

2010–2014



Aboriginal and Torres Strait Islander Education Action Plan 2010-2014

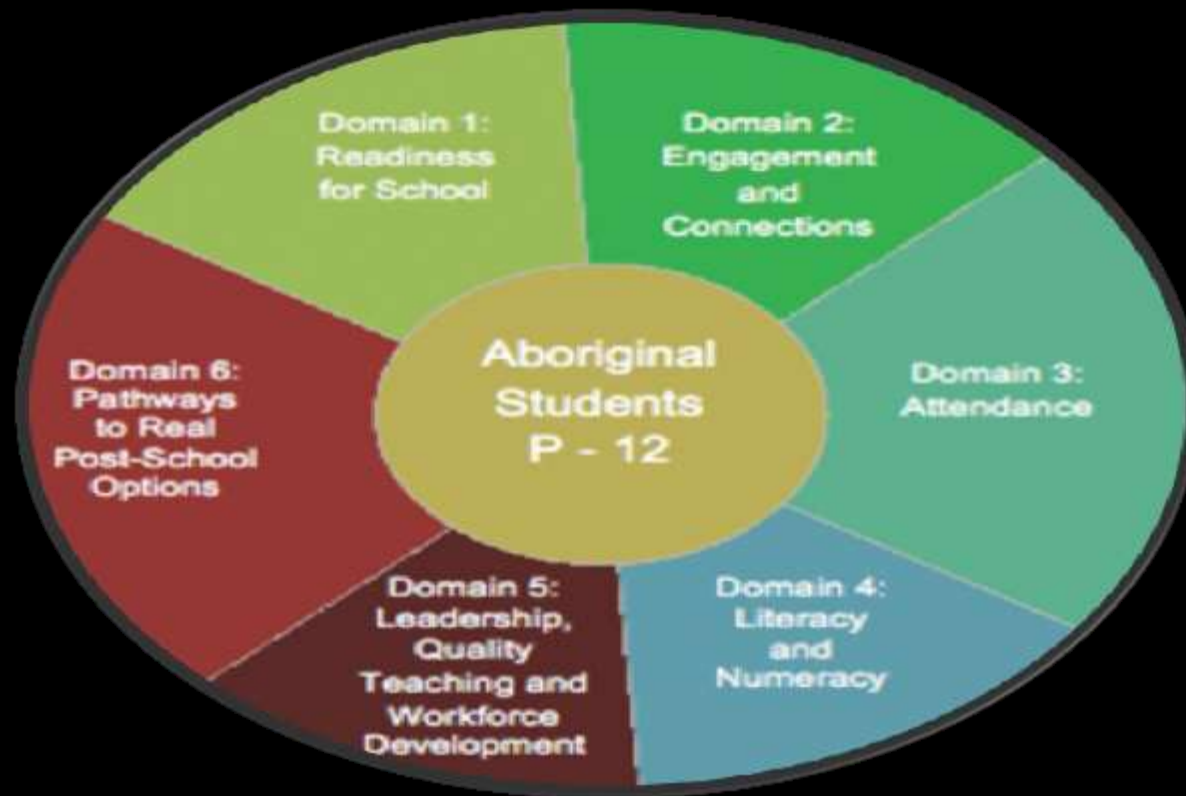
Launched Thursday 9 June 2011

The purpose of the Plan is to:-

- ***Assist all schools and others involved in education and training to accelerate improvements in the educational outcomes of Aboriginal students.***

ATSI- Education Action Plan

What difference have you made in your school and community under any of the domains?



We can't solve today's problems with
the same thinking that created them.

Einstein



INNOVATION

It's not trespassing to go beyond your
own boundaries.

When we think we have the truth we
stop learning.